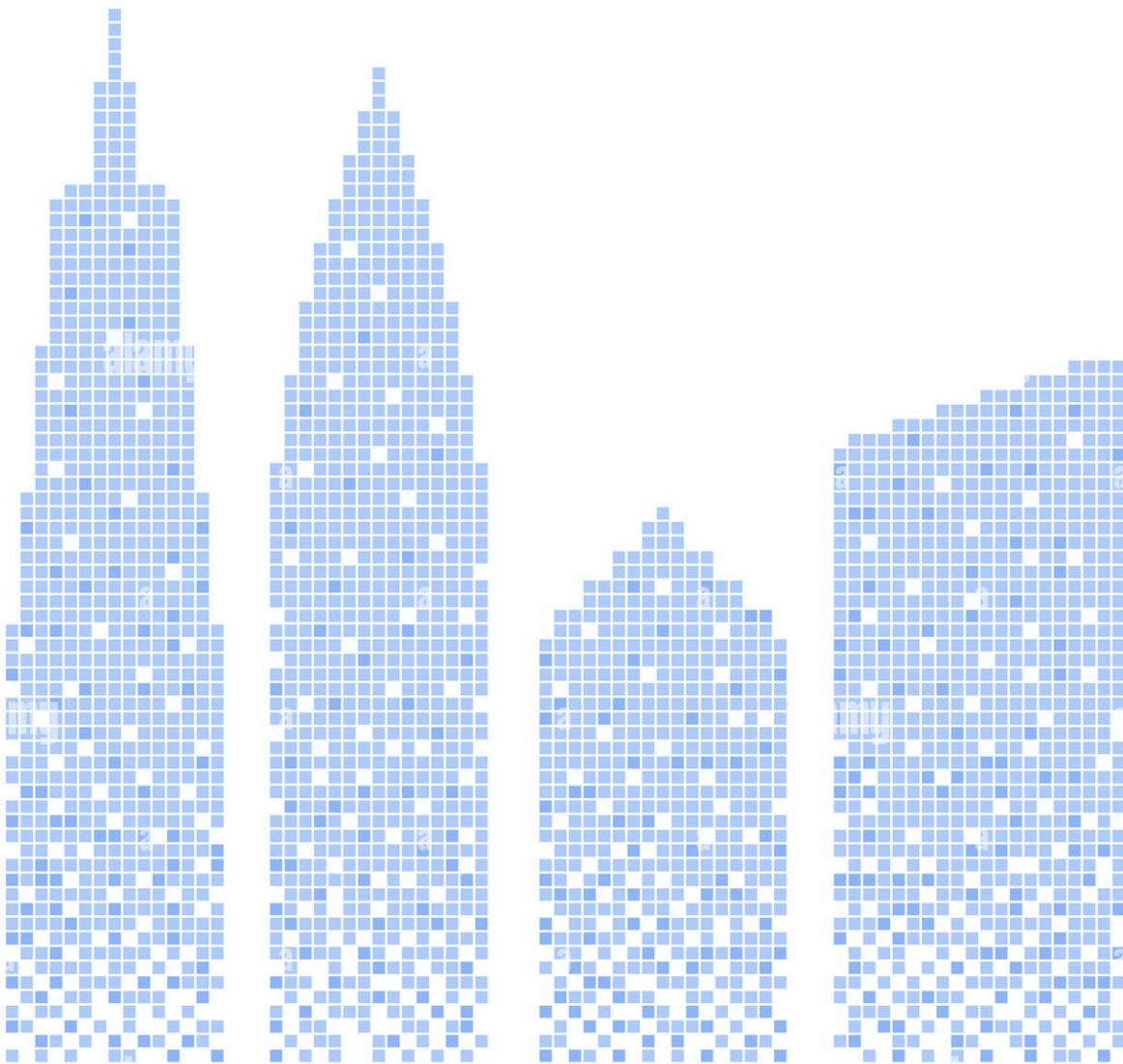


City of Blue

GIS City Development Plan
-2022-





Contents

1. Project goal
2. Budget
 - A. Technology
 - B. Software
3. Summary
 - A. Geodatabase
 - B. Population
4. Maps
 - A. City Limits and Population
 - B. Land Use and Zoning
 - C. Traffic
 - D. Municipalities
 - E. Businesses
5. Conclusion
6. Discussion

SECTION 1. PROJECT GOAL

- Develop GDB for City of Blue, including project boundary, zoning, land use, transportation, and population data by May 18, 2022.
- Proposed site location is in San Bernardino County, CA.
- Proposed budget is \$80k for hardware and equipment and \$10k for software and data purchases.
- Features must include utilities, municipalities and agencies, roads, census data, and natural features.
- Features must correspond to zone type.

SECTION 2. BUDGET

2A: Technology

Item	Brand	Quantity	Price per Unit	Price
PC	HP Pavilion	10	\$1,200	\$12,000
UAV	DJI Phantom 4 RTK	2	\$8,000	\$16,000
Plotter Printer	HP Designjet	2	\$5,000	\$10,000
Tablet	Apple iPad	5	\$300	\$1,500
GPS Unit	Trimble Geo 7X	3	\$3,500	\$10,500
Digital Camera	Olympus TG6	5	\$500	\$2,500

2B: Software

Item	Brand	Quantity	Price per Unit	Price
GIS Suite	ESRI ArcGIS + Extensions			\$15,000
UAV Software	DJI	2	-	-
Aerial Data Imagery	EagleView			\$20,000
Total Budget				\$87,500.00

SECTION 3. SUMMARY

3A: Geodatabase

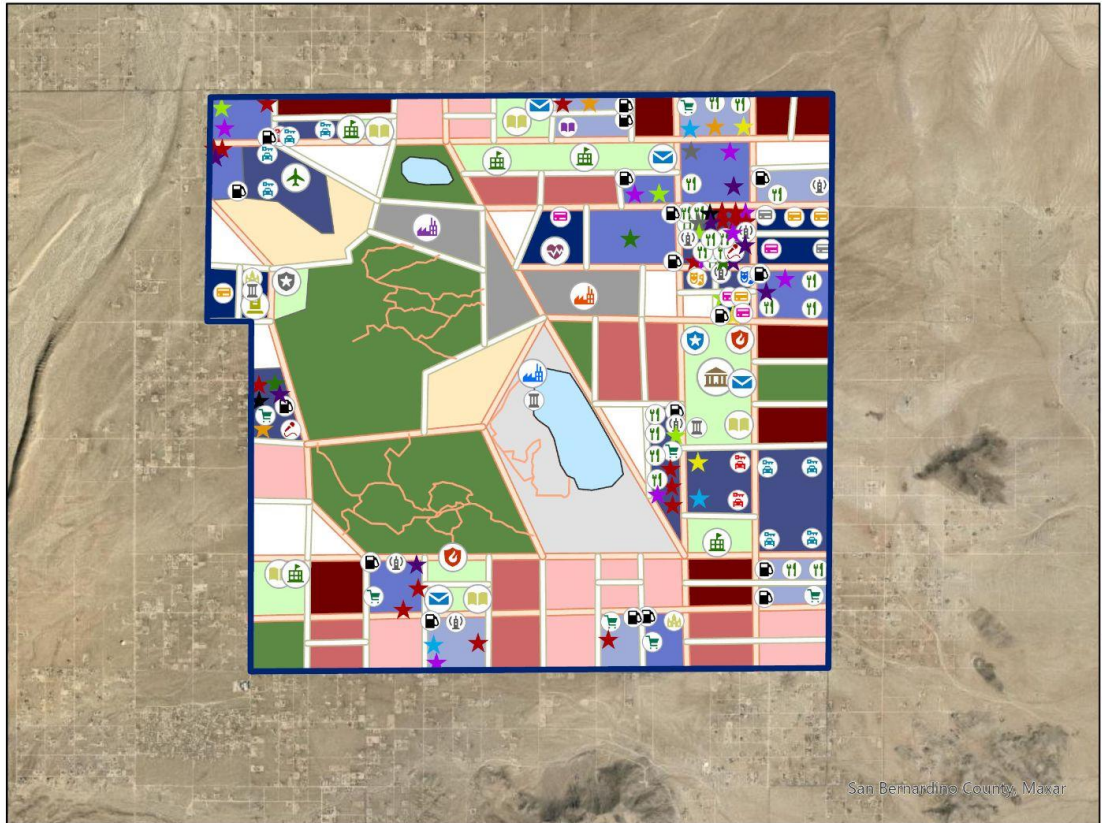
- Coordinate System: WGS 1984 Web Mercator (Auxiliary Sphere)
- Coordinates: 34.2307°N, 116.3442°W
- Project Area: 37.8115 mi².

3B: Population

- Population: 11,813 People
- Population Density: 312.4182 People per mi².

SECTION 4. MAPS

4A: Overview

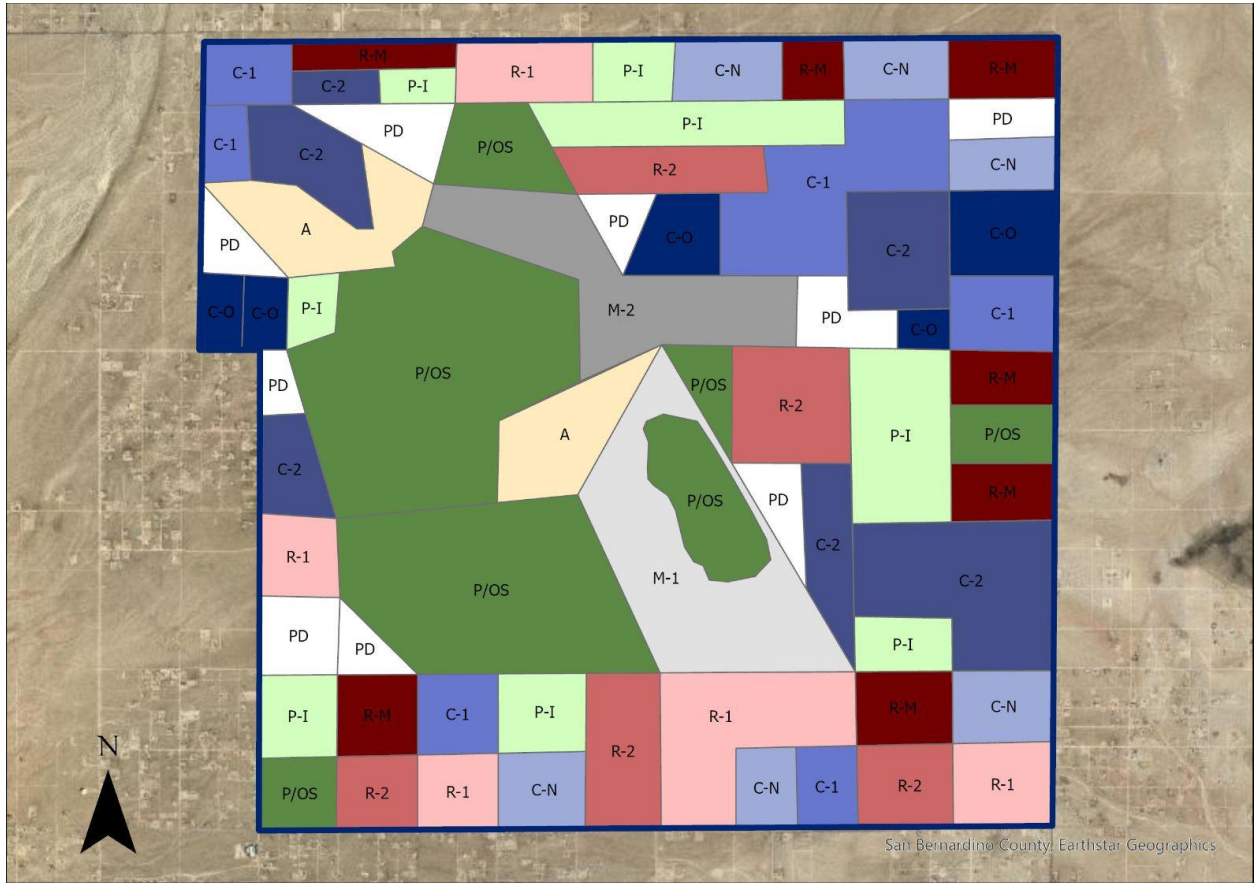


San Bernardino County, Mexico

Legend

<p> City Boundary</p> <p>Businesses</p> <p>Type</p> <ul style="list-style-type: none"> grocery store apparel computer store furniture store jewelry store home store salon shoe store thrift store art store video game store dentist office attorney firm therapy office restaurant 	<ul style="list-style-type: none"> gas station car dealership auto repair book store bowling alley church movie theater museum music store phone store <p>Municipalities</p> <p>Type</p> <ul style="list-style-type: none"> airport cemetery fire station hospital 	<ul style="list-style-type: none"> library police station post office prison school town hall power generation facility waste treatment facility water treatment facility Water <p>COB_Roads</p> <p>Type</p> <ul style="list-style-type: none"> Small Large Sidewalk 	<p> Hiking Trail</p> <p>COB_Zones</p> <p>Type</p> <ul style="list-style-type: none"> A P-I P/OS PD M-1 M-2 C-N C-1 C-2 C-0 R-1 R-2 R-3
---	---	---	---

4B: Zoning



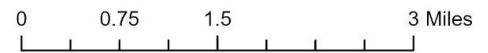
— COB_Boundary

COB_Zones

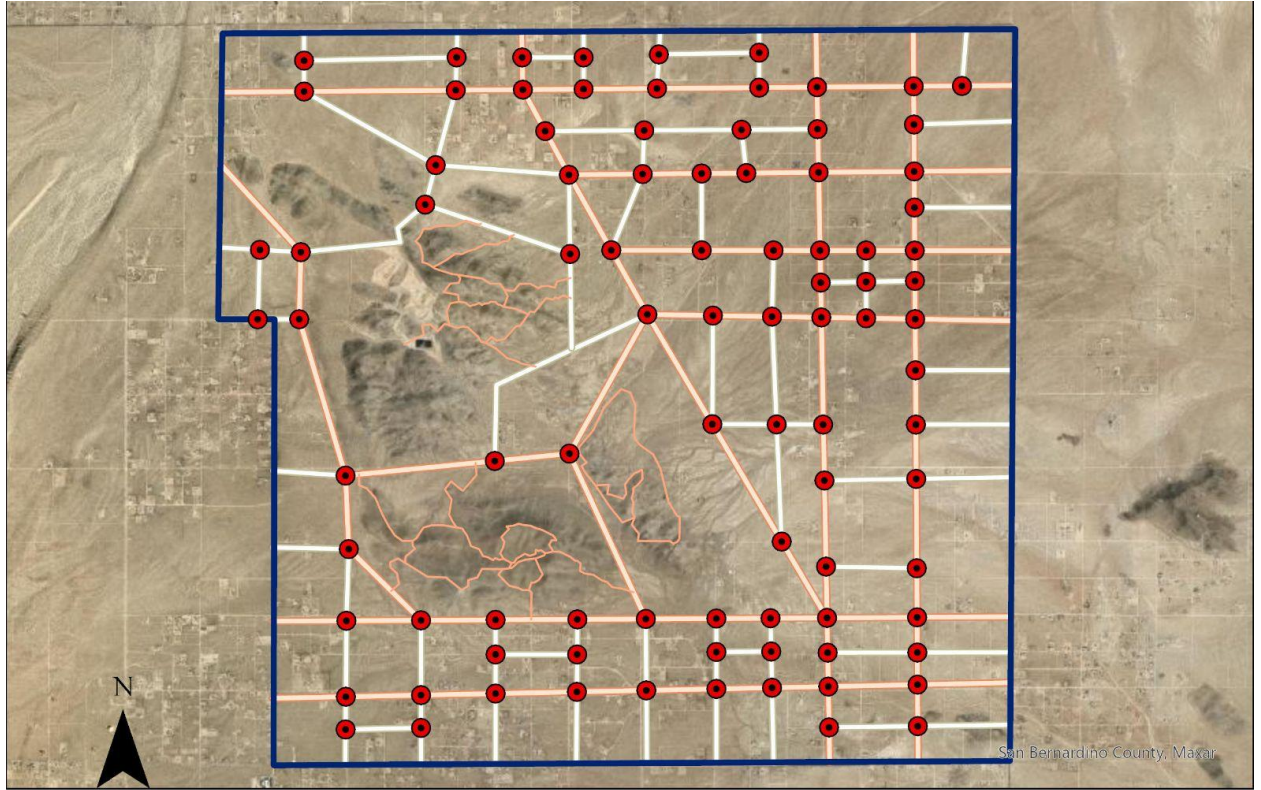
Type

- Agriculture (A)
- Public - Infrastructure (P-I)
- Park/ Open Space (P/OS)
- Planned Development (PD)
- Light Industrial (M-1)

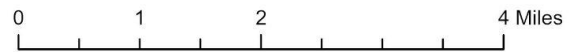
- Moderate Industrial (M-2)
- Commercial - Neighborhood (C-N)
- Light Commercial (C-1)
- General Commercial (C-2)
- Commercial Office (C-O)
- Single Family Residential (R-1)
- Two Family Residential (R-2)
- Multi Family Residential (R-3)



4C: Transportation



- COB_Intersections
- COB_Boundary

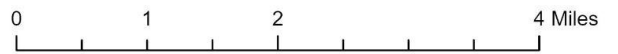
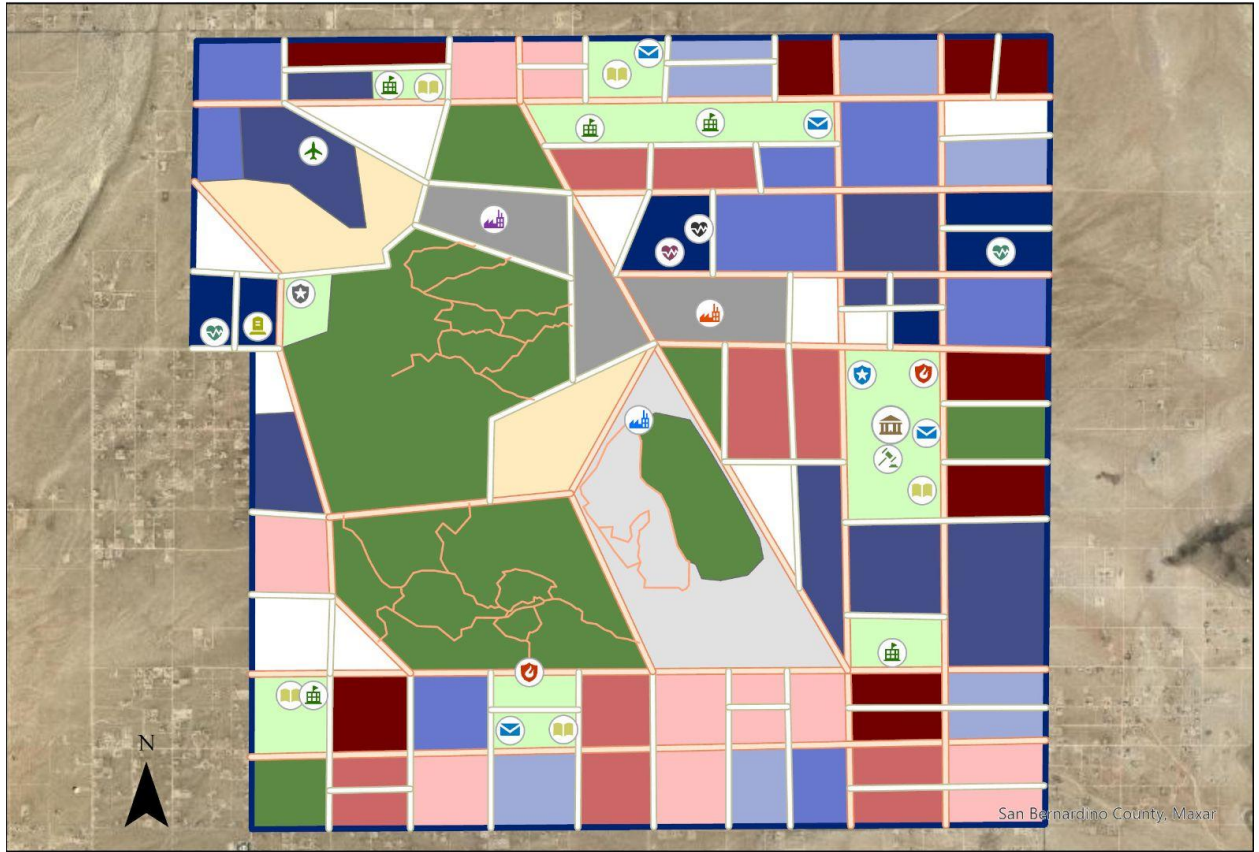


COB_Roads

Type

- Small
- Large
- Sidewalk
- Hiking Trail

4D: Features - Municipalities



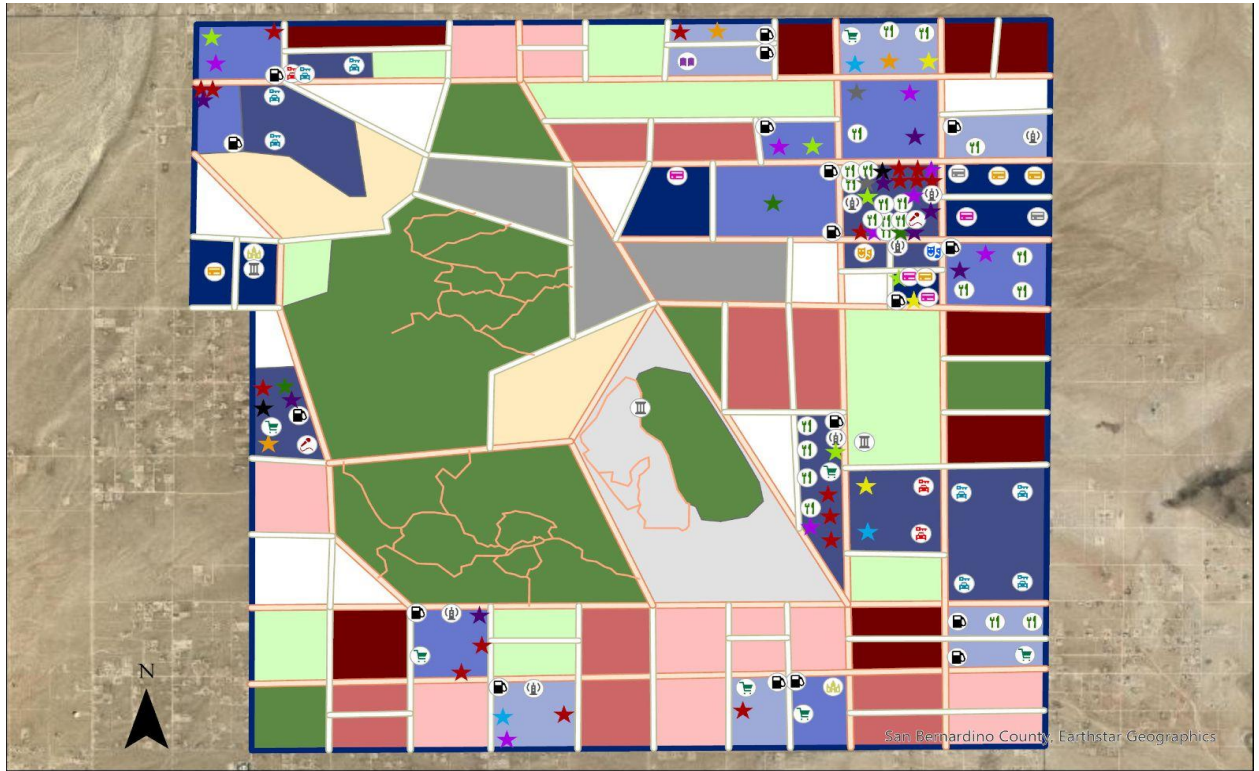
Municipalities

- airport
- cemetery
- fire station
- hospital
- emergency room

- clinic
- library
- police station
- post office
- prison
- school

- town hall
- court
- power generation facility
- waste treatment facility
- water treatment facility

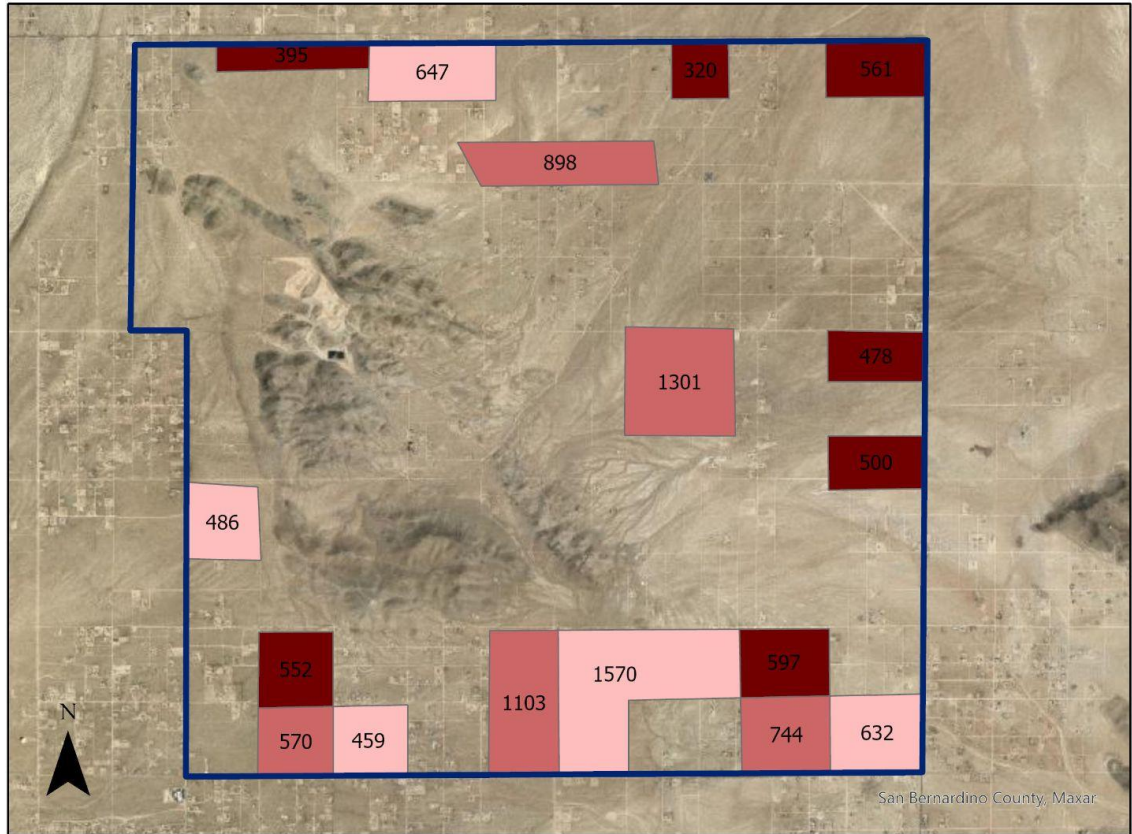
4E: Features - Businesses



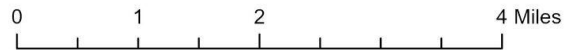
Businesses

- | | | | |
|-----------------|------------------|----------------|---------------|
| grocery store | home store | attorney firm | bowling alley |
| apparel | salon | therapy office | church |
| computer store | shoe store | restaurant | movie theater |
| furniture store | thrift store | gas station | museum |
| jewelry store | art store | car dealership | music store |
| | video game store | auto repair | phone store |
| | dentist office | book store | |

4F: Population



Number of People



Zone

- Single Family (R-1)
- Two Family (R-2)
- Multi Family (R-3)

SECTION 5. CONCLUSION

- The City of Blue incorporates suburban living with natural features and an urban center.
- Residential zones consist of the outer areas of the city, while remaining equally close to denser commercial areas as well as natural features.
- Natural features include hills with hiking trails and agricultural regions in the west, parks throughout, and a



reservoir in the city center.

- The commercial center of the city includes a mall and corporate complex in the north-east, immediately north of the city hall, and strip-mall to its west.
- Neighborhood commercial areas include local shopping centers, interspersed with schools and other public infrastructure.

SECTION 6. DISCUSSION

- GIS Software used: ESRI ArcGIS Desktop
- This project was an insightful lesson on the lengths a city-planner must go to design a city and its components to maintain functionality and form.
- Improvements could be made in verifying the corresponding feature with zone classification, as well as rigorously comparing population estimates to actual regional averages.