

# The Everest Base Camp Trek:

Adventure Elevated

By Matthew Gonzalez



# Where to Begin?



The best spot to begin the Trek to Everest Base Camp is Kathmandu, NP. Within the region, you will find the accommodations any major city has to offer.

# What's Next?

The flight to Kathmandu is followed by another, much shorter flight. However, beware that this airport is among the most dangerous in the world. This is due to constantly shifting weather conditions and the small landing strip following.



# Tenzing Hillary Airport



# The Destination: Everest Base Camp

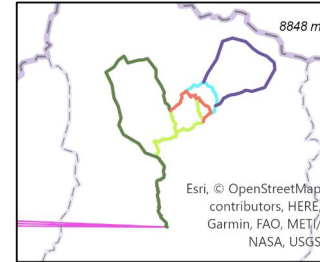
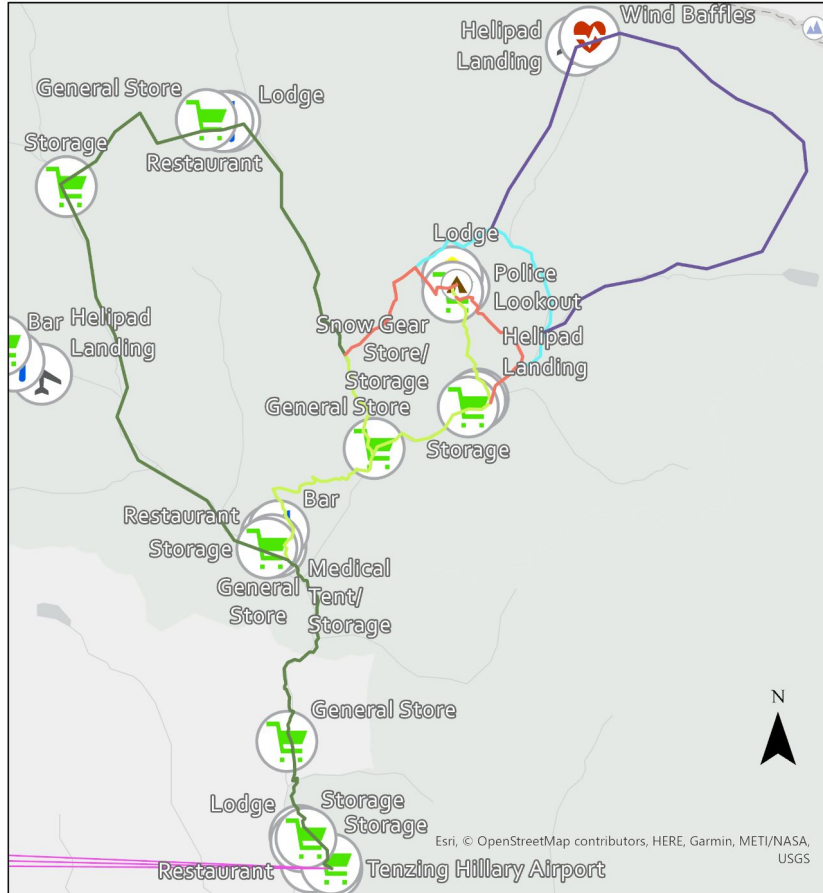
# Which Way?



- ROUTES**  
**TYPE**
- PATH 5
  - PATH 2
  - PATH 4
  - PATH 3
  - PATH 1
  - AIRPLANE ROUTE

There are various villages and potential paths worth exploring once landed in Lukla Airport beyond just the Everest Base Camp. Various routes are highlighted here, which could be combined in various ways to customize your excursion.

# MT. EVEREST: ADVENTURE ELEVATED



## Routes

- Type
- Path 5
  - Path 2
  - Path 4
  - Path 3
  - Path 1
  - Airplane Route
  - <all other values>

## Landmarks

- Type
- Base Camp
  - Mt Everest

## Hub Features

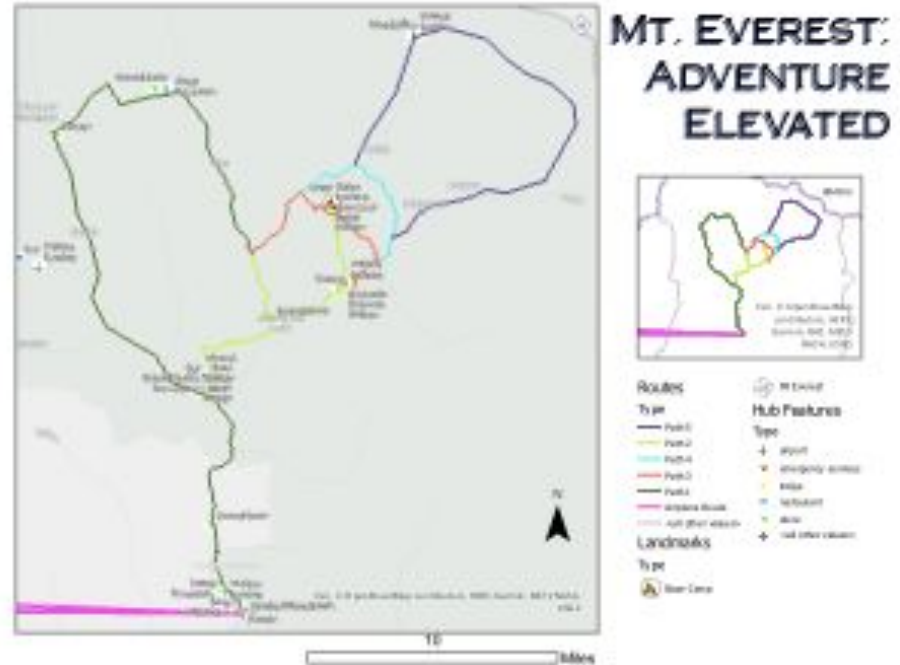
- Type
- airport
  - emergency services
  - lodge
  - restaurant
  - store
  - <all other values>

10

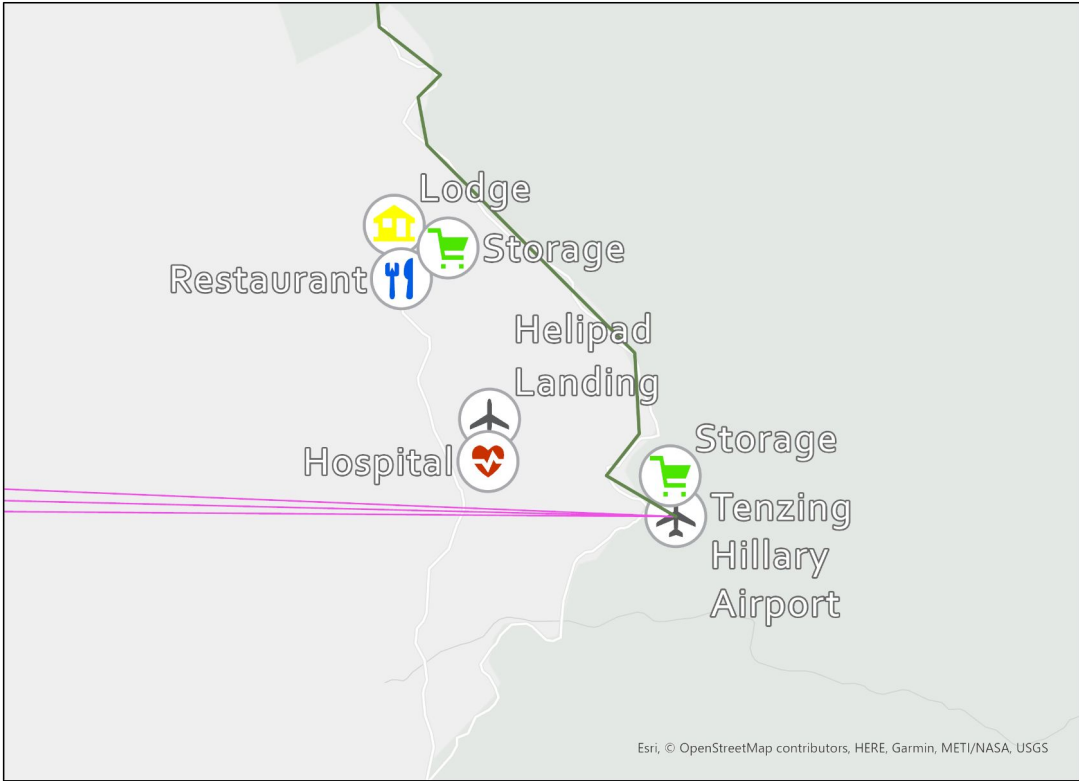
Miles

# What If?

This map projects possible locations for expanded tourism attractions and travel necessities. These include restaurants, lodges, and storage facilities among other faculties, such as emergency rescue facilities, new helipad landing sites, and Wind Barriers to protect flights and the alleviate Avalanche risk. Following are images of hubs that could be constructed.







General Store



Lodge



Restaurant

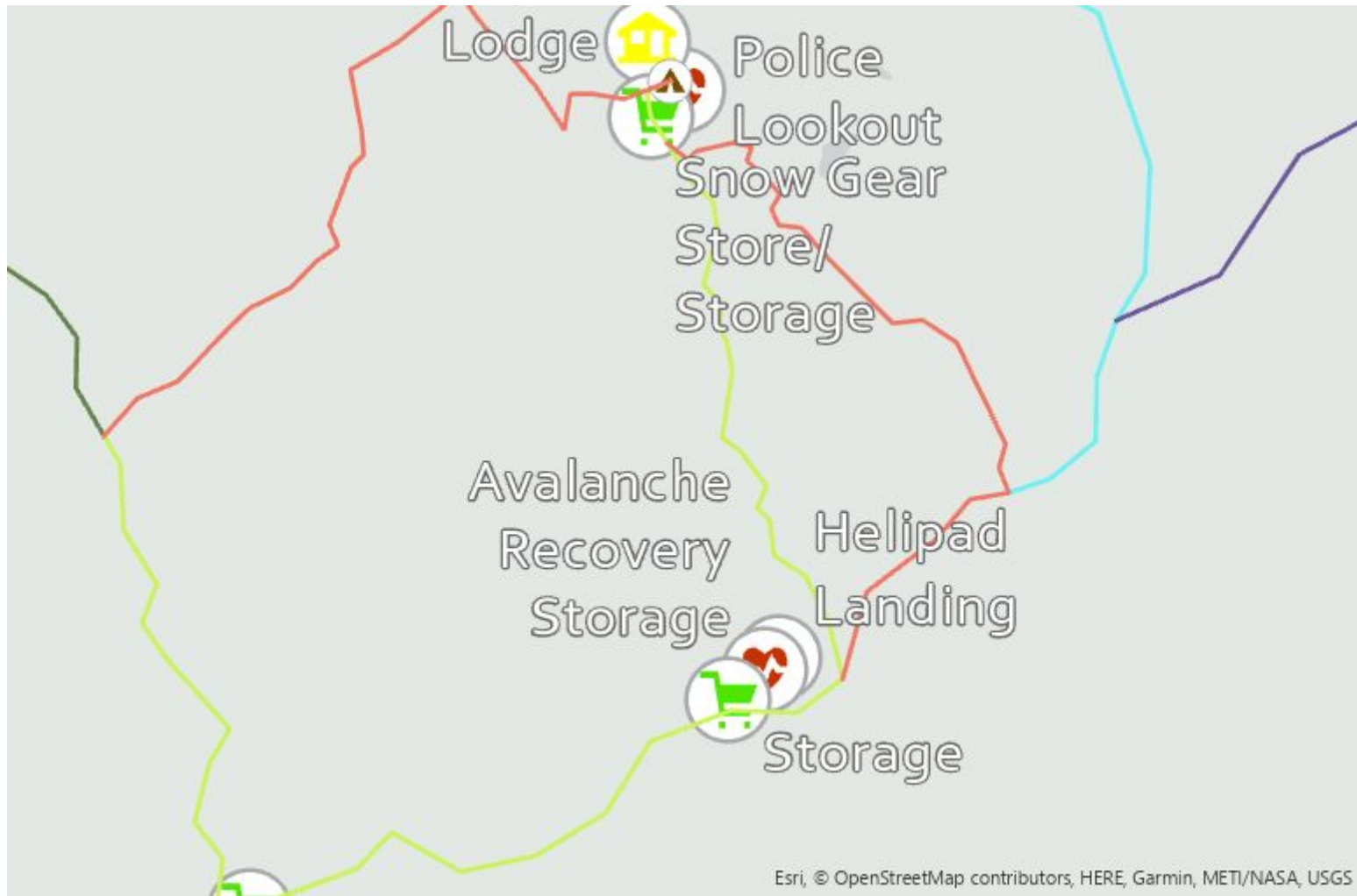


Bar



Helipad  
Landing





Lodge



Police

Lookout

Snow Gear  
Store/  
Storage

Avalanche  
Recovery  
Storage

Helipad  
Landing



Storage

# How Long?

Here is an estimated 3  
Week Trip Itinerary . . .

## WEEK 1

Mon - Flight to Kathmandu

Tues - Flight from Kathmandu (Tribhuvan International Airport) to Lukla (Tenzing Hillary Airport).

Wed - Travel from Lukla to Phakding (5 mi)

Thurs - Travel from Phakding to Namche Bazar (5 mi)

Fri - Rest in Namche Bazar

Sat - Travel from Namche Bazar to Samde (4 mi)

Sun - Travel from Samde to Kyoba (4 mi)

## WEEK 2

Mon - Travel from Kyoba to Gokyo (5 mi)

Tues - Rest in Gokyo

Wed - Travel from Gokyo to Luja (6 mi)

Thurs - Travel from Luja to Chaturje ( 5 mi)

Fri - Travel from Chaturje to Everest base camp (3 mi)

Sat - Rest in Base camp

Sun - Rest in Base camp

## WEEK 3

Mon - Travel from Base camp to Dole (3 mi)

Tues - Travel from Dole to Chhatyang Goth (3 mi)

Wed - Travel from Chhatyang Goth to Namche Bazar (3 mi)

Thurs - Rest in Namche Bazar

Fri - Travel from Namche Bazar to Phakding (5 mi)

Sat - Travel from Phakding to Lukla (5 mi)

Sun - Fly from Lukla to Kathmandu

# Why Wait?

Start planning a visit today!

A large, dark blue, diagonal shape that starts from the bottom left corner and extends towards the top right corner, covering the lower half of the slide.